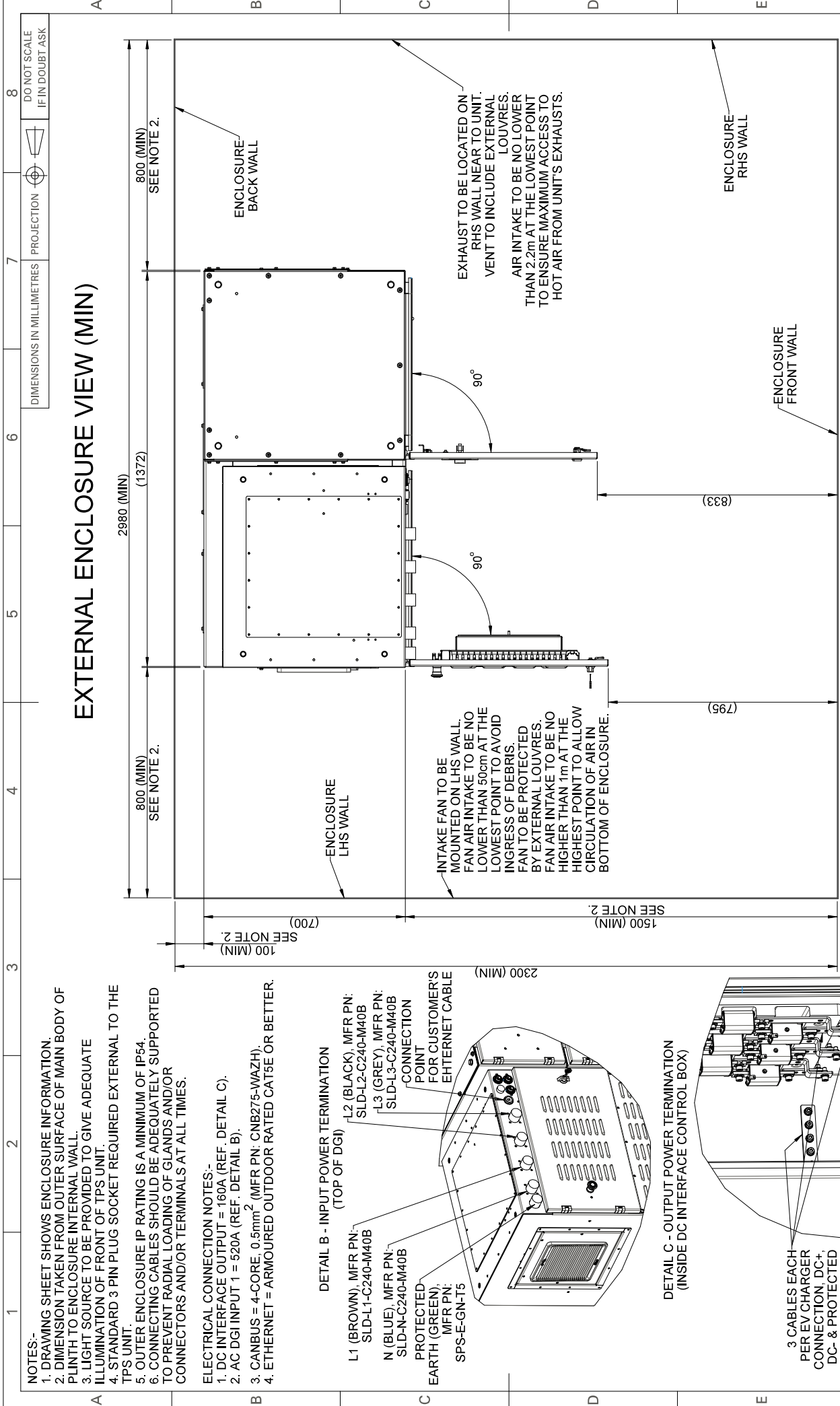


Copyright © as dated, the information contained in this document is proprietary to Turbo Power Systems Ltd ("TPS") and by accepting and using this document, the recipient agrees to protect its contents from further dissemination, (other than that which the recipient's organization necessarily has to release such information) without the express written permission of TPS. You may not possess, use, copy or disclose this information, in whole or in part for any purpose including, without limitation, design, manufacture, repair of part or reverse engineering. TPS, You may not possess, use, copy or disclose this information, in whole or in part for any purpose including, without limitation, design, manufacture, repair of part or reverse engineering. TPS, You may not possess, use, copy or disclose this information, in whole or in part for any purpose including, without limitation, design, manufacture, repair of part or reverse engineering.



TPS
1 Queens Park, Queensland North, Gladstone Valley Trading Est., NE11 0CD
Tel: +44 (0)1841 485 8900 Fax: +44 (0)1841 485 9201

TITLE:	DGI & DC INTERFACE UNIT OUTLINE
DRAWN - NAME & DATE:	D. JACKSON 11/07/24
CHECKED - NAME & DATE:	A. REWILL 11/07/24
APPROVED - NAME & DATE:	J. BOYLAN 11/07/24
MATERIAL:	SEE PARTS
FINISH:	SEE PARTS
STATUS:	Prototype Released
DRAWING No.:	002792-OUTLINE
SHEET:	2 of 2
SURFACE FINISH:	n/y/ Ra V.005
REV:	A

THE TOLERANCE ON DIMENSIONS FOR WHICH NO LIMITS ARE GIVEN SHALL BE AS SHOWN BELOW

NOM SIZE (mm)	OVER (+)	TO (-)
0 - 6	0	0
6 - 120	0	0
120 - 500	0	0
500 - 1000	0	0
1000 - 1500	0	0
1500 - 2000	0	0
2000 - 3000	0	0
3000 - 4000	0	0
4000 - 6000	0	0
6000 - 10000	0	0
MACHINED	±	±
FABRICATED	±	±

- NOTES:-**
- DRAWING SHEET SHOWS ENCLOSURE INFORMATION.
 - DIMENSION TAKEN FROM OUTER SURFACE OF MAIN BODY OF PLINTH TO ENCLOSURE INTERNAL WALL.
 - LIGHT SOURCE TO BE PROVIDED TO GIVE ADEQUATE ILLUMINATION OF FRONT OF TPS UNIT.
 - STANDARD 3 PIN PLUG SOCKET REQUIRED EXTERNAL TO THE TPS UNIT.
 - OUTER ENCLOSURE IP RATING IS A MINIMUM OF IP54.
 - CONNECTING CABLES SHOULD BE ADEQUATELY SUPPORTED TO PREVENT RADIAL LOADING OF GLANDS AND/OR CONNECTORS AND/OR TERMINALS AT ALL TIMES.

- ELECTRICAL CONNECTION NOTES:-**
- DC INTERFACE OUTPUT = 160A (REF. DETAIL C).
 - AC DGI INPUT 1 = 520A (REF. DETAIL B).
 - CANBUS = 4-CORE, 0.5mm² (MFR PN: CNB275-WMAZH).
 - ETHERNET = ARMOURED OUTDOOR RATED CAT5E OR BETTER.

